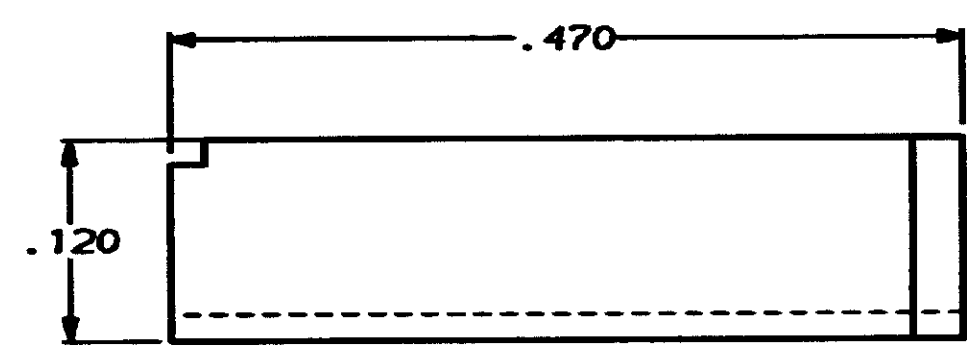
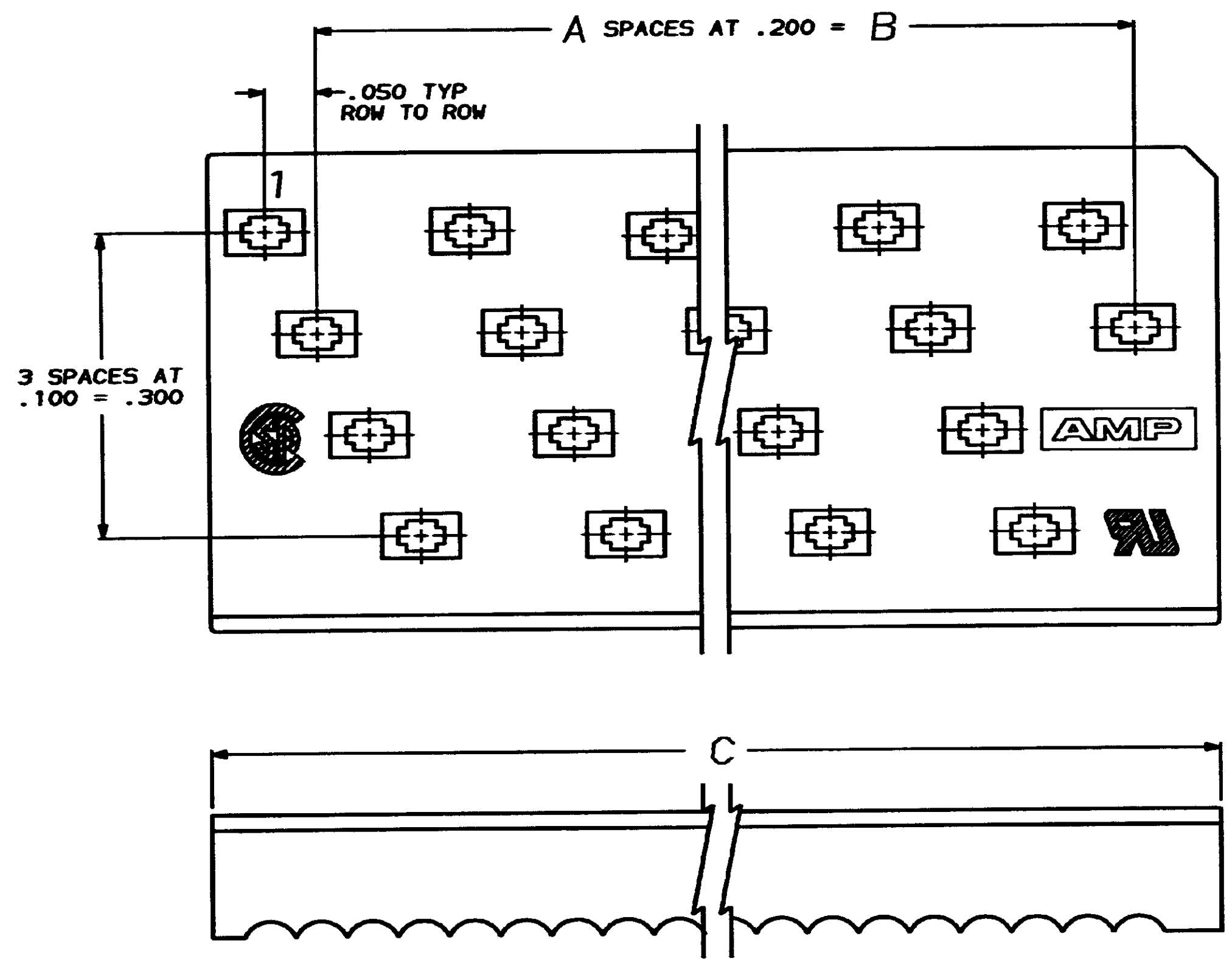


REVISIONS				
LOG	REV	DATE	DESCRIPTION	APPRO
	0		RELEASED WAS 88-5130-6	
A	1		REVSD/ECN CF-1706	



2.986	2.800	14	58	1-111359-3
2.786	2.600	13	54	1- -2
2.586	2.400	12	50	1- -1
2.386	2.200	11	46	1- -0
2.186	2.000	10	42	-9
1.986	1.800	9	38	-8
1.786	1.600	8	34	-7
1.586	1.400	7	30	-6
1.386	1.200	6	26	-5
1.186	1.000	5	22	-4
.986	.800	4	18	-3
.786	.600	3	14	-2
.586	.400	2	10	111359-1
C	B	A	NO OF POSN	PART NUMBER

DO NOT SCALE PRINT. UNLESS SPECIFIED DIMENSIONS IN INCHES TOLERANCES ON + 2 PLC DEC ± - 3 PLC DEC ± .005 ANGLES ± 0°30'	DR - <i>S. Weiden 2-25-88</i>	AMP AMP INCORPORATED Harrisburg, Pa. 17105
	CHK - <i>W. G. Lamber 2-25-88</i>	
	APPD - <i>M. A. Vise 2-25-88</i>	
	APPD - <i>D. Hoffman 2-25-88</i>	
MATERIAL FLAME RETARDANT, 94 V-0 RATED, GLASS FILLED POLYESTER, COLOR: BLACK	PRODUCT SPEC	NAME COVER, PADDLEBOARD, SHORT END, AMP-LATCH
FINISH	APPLICATION SPEC	SIZE D
	WEIGHT	FSCR NO 00779
		DRAWING NO 111359
		SCALE 10:1
		SHEET -OF-

CUSTOMER DRAWING